

# SolarString EL-lab | EL-inline

## Electroluminescence String Inspection

Innovative inspection solutions  
for the photovoltaic industry



### High speed string inspection systems for electroluminescence imaging

- Fast image acquisition
- Reliable inspection
- Compact design
- Made in Germany

The SolarString family is a very high speed electroluminescence inspection system for stand-alone use or as fully integrated inline system. The unique multi-camera approach reduces the inspection time to less than 5 sec, which is very important for fully automated layup systems.

# SolarString EL-lab | EL-inline

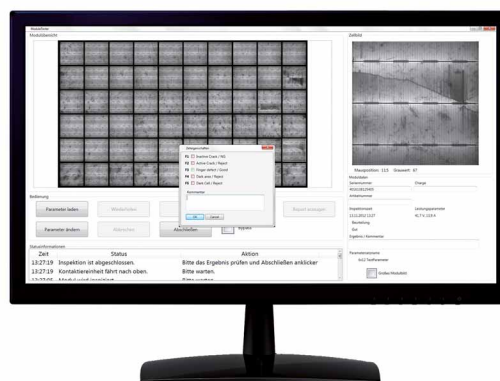
## Electroluminescence String Inspection



### Field of Application

The **SolarString EL-lab** is a stand-alone electroluminescence imaging system. It is the perfect tool for production environments to assure the quality of the solar strings before lamination or after being repaired.

The **SolarString EL-inline** is an high speed and high resolution inline electroluminescence inspection system. The multiple camera approach allows cycle times below 5 seconds. An innovative image processing software leads to reliable inspection results even on multi-crystalline cells. 2D-measurement and edge inspection are available as options. The integration into the layup system ensures a direct feedback to the stringing process.



The user friendly graphical user interface

Model	SolarString EL-lab	SolarString EL-inline
Resolution	200 µm	200 µm
Camera type	Cooled 2 Megapixel NIR CMOS camera	Cooled 2 Megapixel NIR CMOS camera
String size	up to 12 cells (5" and 6")	uo to 12 cells (5" and 6")
Image aquisition time	< 5 sec	< 5 sec
Dimensions (W x Lx H)	500 x 2120 x 1010 mm	600 x 2120 x 1200 mm
Available options	n/a	2D measurement for layup control/ edge inspection



MBJ Solutions GmbH  
Neuer Höltigbaum 15  
D-22143 Hamburg

Phone +49 40 22 6162 300  
info@mbj-solutions.com  
www.mbj-solutions.com