

SolarModule EL-quickcheck

Electroluminescence Module Inspection

Innovative inspection solutions
for the photovoltaic industry



Stand-alone high speed inspection system
for electroluminescence imaging

- Fast image acquisition
- Easy to use
- Compact design
- Made in Germany

The SolarModule EL-quickcheck is an electroluminescence inspection system with 7,8 MPixel resolution. It is the ideal system to check the quality of framed crystalline modules. The simple design and the ease of use makes the system very user friendly.

SolarModule EL-quickcheck

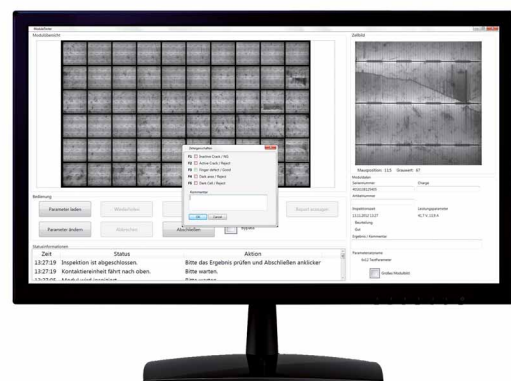
Electroluminescence Module Inspection



Field of Application

The SolarModule EL-quickcheck with its simple mechanical design and the innovative multiple camera concept is designed as an alternative to our high resolution stand alone product family SolarModule EL-lab. It is very fast, easy to operate and is the perfect first step into the world of electroluminescence imaging of solar modules.

It is the perfect tool to visualize typical hidden defects like inactive areas and micro cracks on modules. It can be used as final inspection tool in the module production or as incoming goods inspection tool for trading and installation companies. It's a helpful tool to analyze modules whenever a problem occurs.



The user friendly graphical user interface

Model	SolarModule EL-quickcheck
Resolution	580 μm (7,8 MPixel)
Camera type	cooled NIR CCD cameras
Module size	optimized for crystalline frame modules
Max. module size	1050 x 2050 mm / 1350 x 2050 mm
Image aquisition time	15 sec
Dimensions (W x L x H)	1300 x 2200 x 1120 mm / 1650 x 2200 x 1200 mm



MBJ Solutions GmbH
Neuer Höltigbaum 15
D-22143 Hamburg

Phone +49 40 22 6162 300
info@mbj-solutions.com
www.mbj-solutions.com