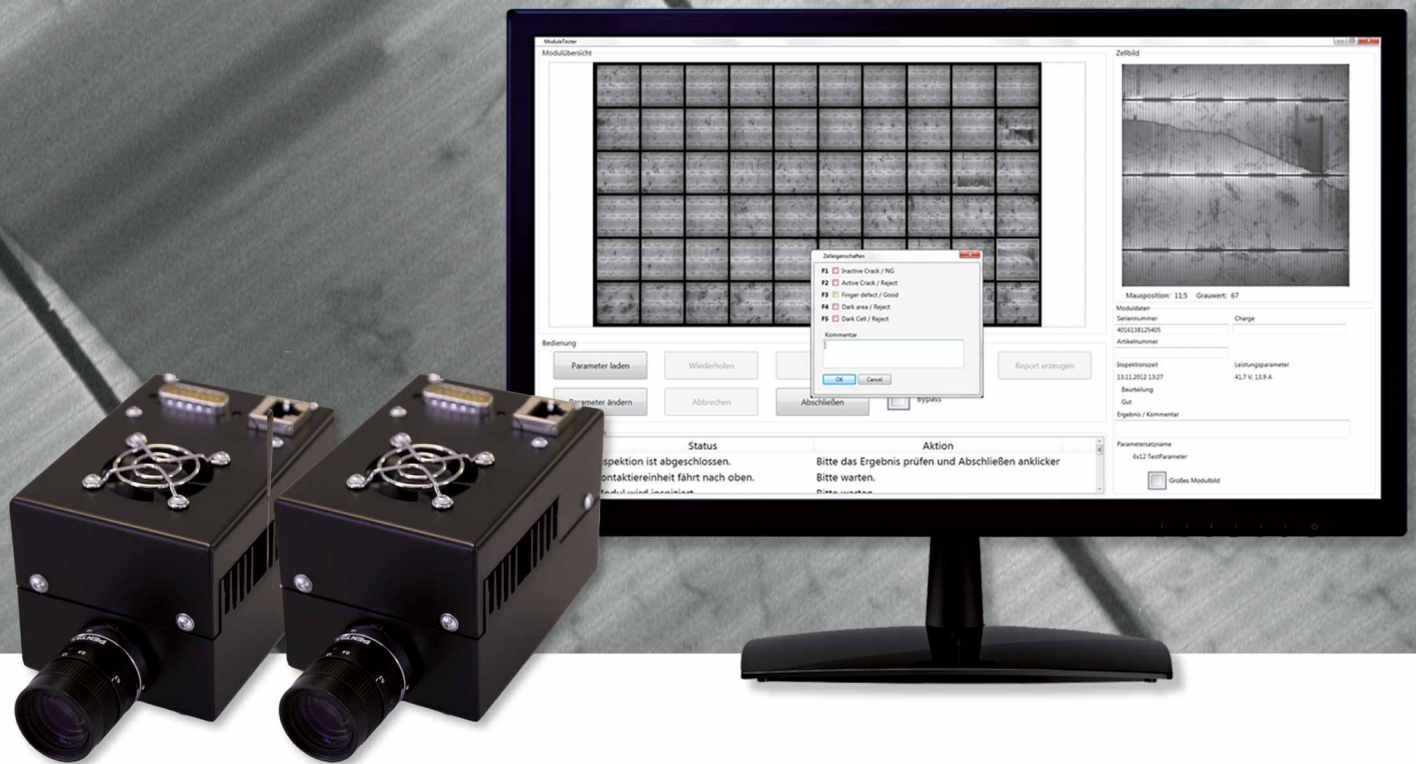


# MBJ camera set

## Electroluminescence Module Inspection

Innovative inspection solutions  
for the photovoltaic industry



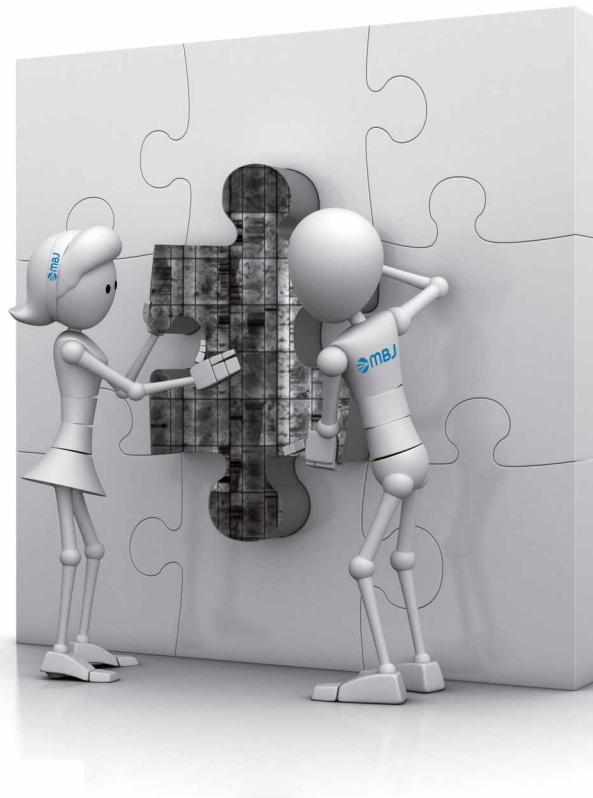
## Electroluminescence inspection for the integration into sun-simulators

- Good image quality
- Fast image acquisition
- Easy to use
- Made in Germany

The MBJ camera set is an electroluminescence inspection solution for the integration into sun simulators. The integration into a sun simulator allows measuring the IV curve and doing the EL inspection in one position. Electroluminescence imaging at the end of line ensures the quality of the produced modules.

# MBJ camera set

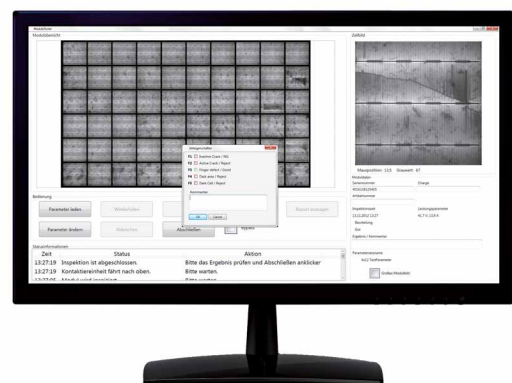
## Electroluminescence Module Inspection



### Field of Application

The **MBJ camera set** is an electroluminescence inspection system for the integration into existing or new tower or tunnel sun simulators. The two fixed CMOS cameras mounted inside of the sun simulator are offering a good image quality. The system is available with 8 and 24 Megapixel.

It is the perfect tool to visualize typical hidden defects like inactive areas and micro cracks on modules. It is the tool of choice to proof the quality of the produced solar modules at the end of line. The integration with the included switch box is simple and can be done with all tower and tunnel sun simulators like Pasan, Berger and H.A.L.M.



The user friendly graphical user interface

| Model                  | MBJ camera set   | MBJ camera set HR      |
|------------------------|--|------------------------|
| Resolution             | ~520 µm (10 Megapixel)   | ~320 µm (24 Megapixel) |
| Camera type            | cooled CMOS camera   | cooled CMOS camera     |
| Field of view          | 1050 x 2050 mm   |                        |
| Image acquisition time | < 3 sec @ 10 A   | < 3 sec @ 10 A         |
| Interface              | DIO, optional: ProfiBus, ProfiNet, CC-Link, WinSocket                        |                        |
| Scope of delivery      | Cameras, lenses, cabinet with PC, bracket for cameras, switch box, cable set |                        |



MBJ Solutions GmbH  
Neuer Hölftigbaum 15  
D-22143 Hamburg

Phone +49 40 22 6162 300  
info@mbj-solutions.com  
www.mbj-solutions.com