

MBJ Camera Set

Electroluminescence Module Inspection



- Good image quality
- Fast image acquisition
- Easy to use
- Made in Germany

Electroluminescence inspection for the integration into sun simulators

The MBJ camera set is an electroluminescence inspection solution for the integration into sun simulators. The integration into a sun simulator allows measuring the IV curve and doing the EL inspection in one position. Electroluminescence imaging at the end of line ensures the quality of the produced modules.

MBJ camera set

Go to product:



Field of Application

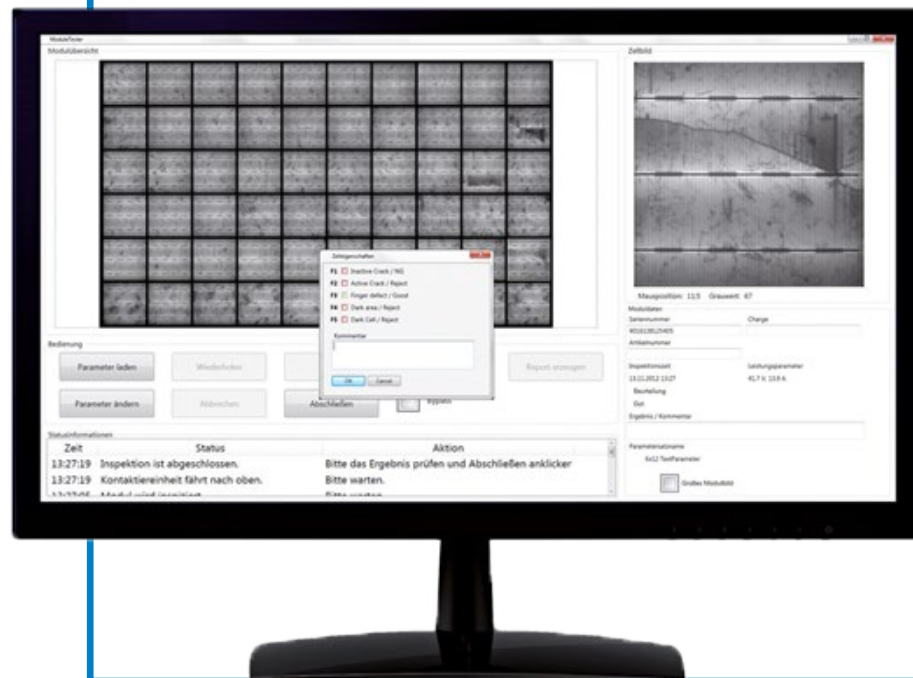
The MBJ camera set is an electroluminescence inspection system for the integration into existing or new tower or tunnel sun simulators.

The two fixed CMOS cameras mounted inside of the sun simulator are offering a good image quality. The system is available with 8 and 24 Megapixel.

It is the perfect tool to visualize typical hidden

defects like inactive areas and micro cracks on modules. It is the tool of choice to proof the quality of the produced solar modules at the end of line.

The integration with the included switch box is simple and can be done with all tower and tunnel sun simulators like Pasan, Berger and H.A.L.M.



The user friendly graphical user interface

MBJ camera set	2 x 5 MPixel	2 x 12 MPixel	2 x 20 MPixel
Resolution	~ 520 µm per pixel	~ 450 µm per pixel	~ 400 µm per pixel
Camera type	5 MPixel cooled CMOS camera	12 MPixel cooled CMOS camera	20 MPixel cooled CMOS camera
Field of view	1050 x 2250 mm	1900 x 2800 mm	2100 x 2800 mm
Image aquisition time	< 3 sec @ 10 A	< 3 sec @ 10 A	< 5 sec @ 10 A
Interface	Profibus-Interface (Standard), optional: DIO, ProfiNet, CC-Link, WinSocket		
Scope of delivery	Cameras, lenses, cabinet with PC, bracket for cameras, switch box, cable set		



MBJ Solutions GmbH
Jochim-Klindt-Straße 7
DE-22926 Ahrensburg

+49 4102 778 90 10
info@mbj-solutions.com
www.mbj-solutions.com

